

TRI  
MO  
QBISS  
ONE

BIM LIBRARY INSTRUCTIONS

## TABLE OF CONTENT

<b>+</b>	<b>Qbiss One facade system</b>	<b>3</b>
<b>+</b>	<b>Library files</b>	<b>3</b>
	What you get in a package	
<b>+</b>	<b>What's new</b>	<b>4</b>
	Favorites	
	Modified icons in Frame Setting window	
	New Qbiss One skin colours	
	Qbiss One facade to soffit and 3D corner detail	
	Additional Boundary details	
	New window with flashing details	
	New window with concealed louvers detail	
	Additional window features	
	New detail naming convention	
<b>+</b>	<b>Getting started</b>	<b>5</b>
	Setup	
	Favorites setup	
	Curtain Wall default settings	
	Using Qbiss One elements	
	Changing frames and panels	
<b>+</b>	<b>Utilising Qbiss One elements</b>	<b>7</b>
	Panels Selection Settings	
	Model view options	
	3D model	
	Schedules	
	Data exchange	
<b>+</b>	<b>Contact   Help</b>	<b>8</b>

### QBISS ONE FACADE SYSTEM

Qbiss One is a design and technological breakthrough. An architectural metal wall offers a true alternative to conventional build-up system. Qbiss One delivers the greatest freedom of expression and offers designs of almost limitless possibilities.

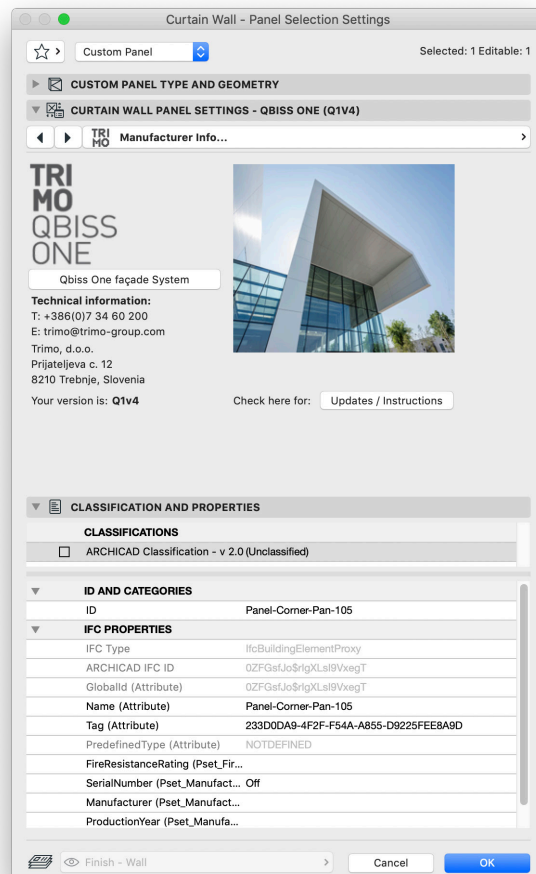
Qbiss One is a world-class engineered, prefabricated, A1 mineral wool-insulated, metal façade system that offers a through wall solution within a single construction element. Façade elements with rounded corners, unmatched flatness and advanced technical characteristics place Qbiss One among the best façade systems in the world.

It brings system approach to the building envelope by uniting all the desired functional advantages of high quality wall systems with the best aesthetics. The combination of aesthetics, design and function are all united in one system.

### LIBRARY FILES

Qbiss One BIM library is a list of elements working inside the Curtain Wall tool in ARCHICAD. It is relevant for ARCHICAD version 22-25.

Library can be downloaded at: [www.trimo-group.com/en/downloads/design-tools/bim](http://www.trimo-group.com/en/downloads/design-tools/bim)



## What you get in a package

The package Qbiss One Library ARCHICAD 22-24 QOV4.zip contains the following files:

- "Qbiss\_One.lcf"
- "CW-Qbiss frames.xml"
- "CW-Qbiss panels.xml"
- Qbiss One Favorites.prf
- "BIM Qbiss One Library Instructions.pdf"

## WHAT'S NEW

### Favorites

For using Qbiss Screen BIM tool we suggest using "Favorites" as everything already has default mandatory settings.

### Modified icons in Frame setting window

Curtain wall frame settings introduce more illustrative joint icons .

### New Qbiss One skin color

New skin colors respecting current color range of Qbiss One product.

### Qbiss One facade to soffit and 3D corner detail

Soffit detail is a result of technical development of Qbiss One product.

### Additional Boundary details

In Frame selection settings QO-03.01 and QO-03.02 details are added.

### New window with flashing details

Details present an optimized Qbiss One flashing window ending.

### New window with concealed louvers detail

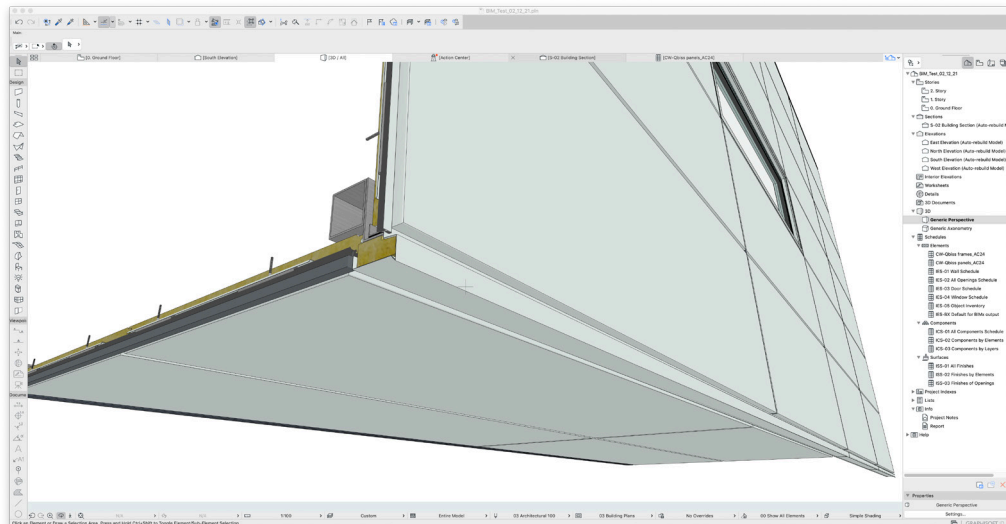
Detail available is the result of continuous technical development.

### Additional windows features

With custom panel windows handle element and opening angle can be checked.

### New detail naming convention

Naming convention is consistent with Qbiss One architectural details.



New Qbiss One facade to soffit detail.

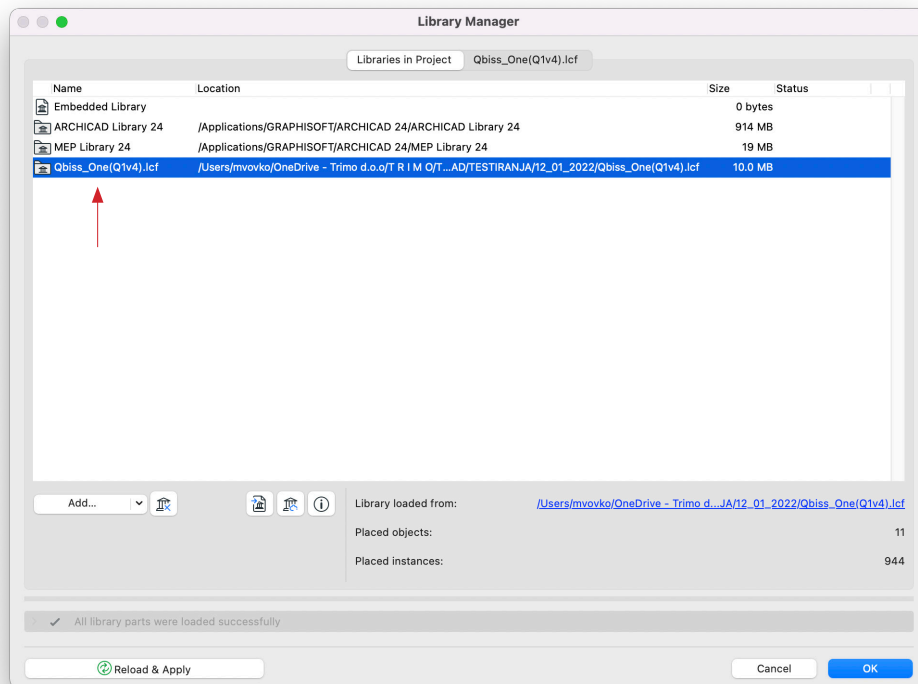
## GETTING STARTED

Qbiss One BIM library is a list of elements working inside the Curtain Wall tool in ARCHICAD. With this tool, two schedule lists can be created (CW-Qbiss frames, CW-Qbiss panels), which are sent in “excel” format to [inquiry@trimo-group.com](mailto:inquiry@trimo-group.com) and Trimo will provide you with a quote.

### Setup

Linked Libraries include the standard ARCHICAD library loaded by default, as well as any other libraries you add. To add a linked library to your solo ARCHICAD project:

1. Open Library Manager (File > Libraries and Objects > Library Manager)
2. From the Libraries in Project tab page, click Add
3. Browse for the desired folder, select it, then click Choose.



### Favorites setup

Use Favorites to apply tool settings configurations that you use frequently. Qbiss One ARCHICAD package includes predefined favorites for all Qbiss One system options. You can access and apply Favorites from: Favorites Palette (Window > Palettes > Favorites).

### Curtain Wall default settings

Curtain Wall tool - some basic principles

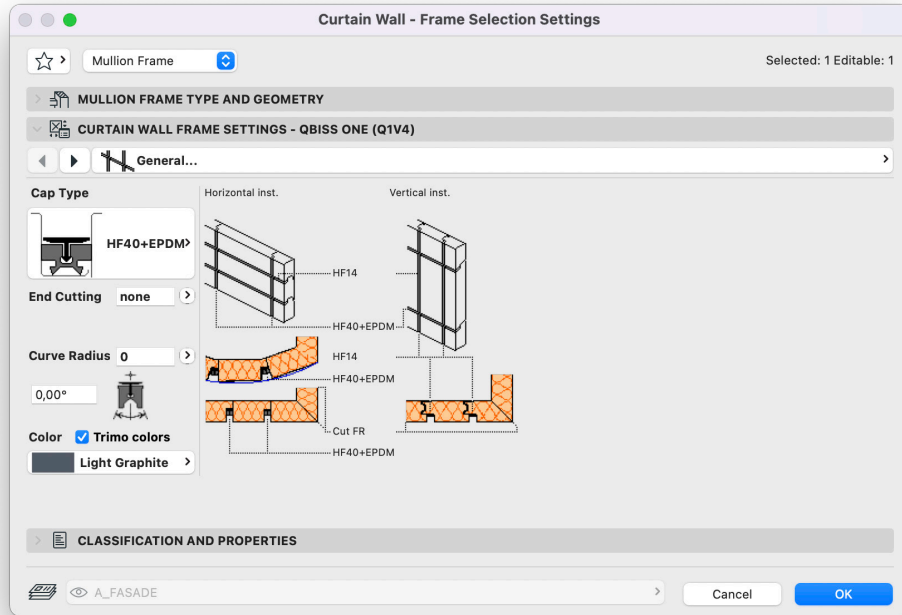
With this tool, we can create different grid structures. Main grid (in Scheme) has “Primary Gridlines” and “Secondary Gridlines”. “Secondary Gridlines” angle can be between 20 and 160 degrees (Rotation).

### Using Qbiss One elements

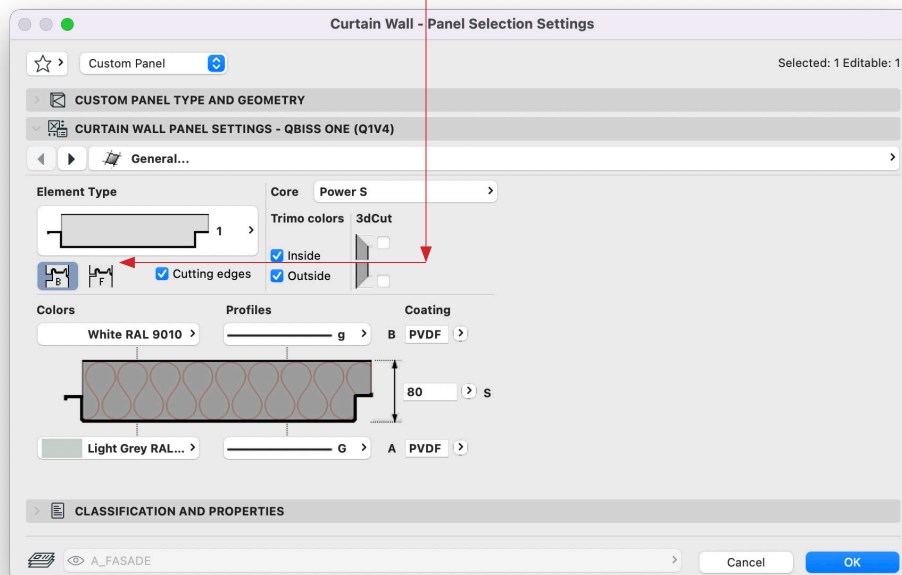
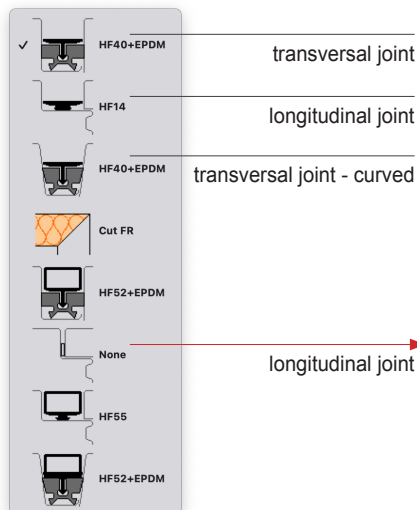
For settings the Curtain Wall, use the Favorites.

### Changing frames and panels

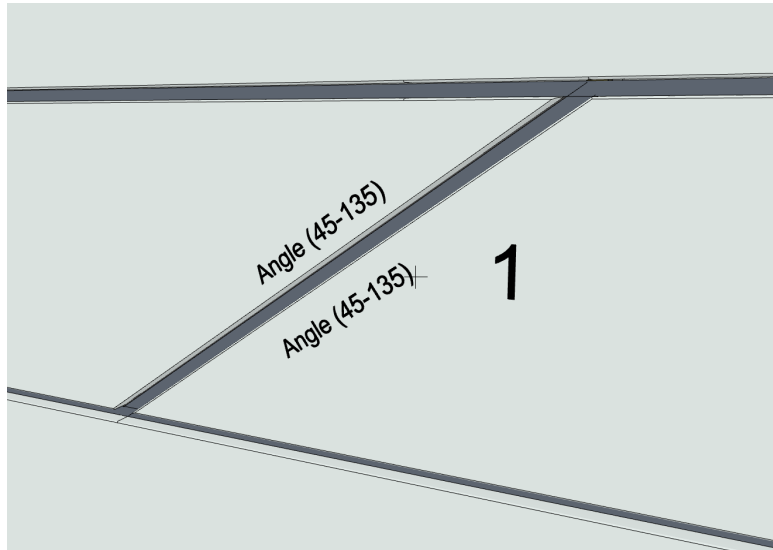
In the Qbiss One Frame the instructions are present, to show where to place certain type of the frame.



If the type “None” is selected on the panel, the “F” option needs to be set.



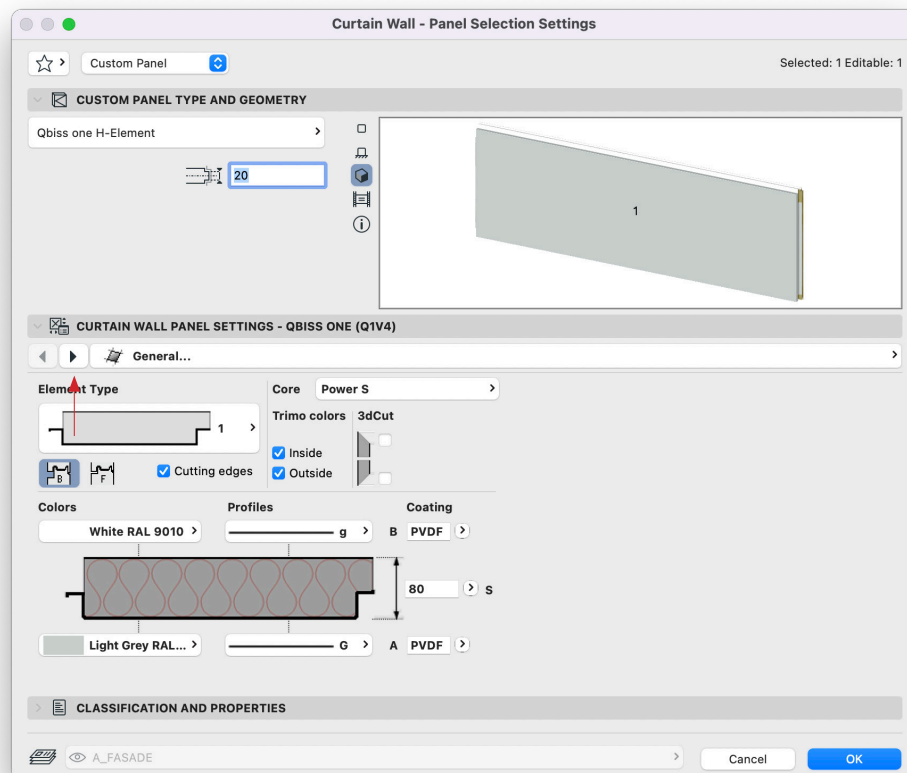
In the 3D window, a message appears, when the parameters exceed the Panel settings limitations. In Model View Options (Document > Set Model View > Model View Options) control the visibility of Error messages by checking on or off.



## UTILISING QBISS ONE ELEMENTS

### Panel Selection Settings

- **General Settings** (main parameters, core type, element type, thickness, colors, profiles)
- **Support Construction** (in the horizontal elements, support construction can be set)
- **Penetrations Settings** (two penetrations can be set per element for opening, louvre or window)
- **Appearance** (control floor plan, section, 3D appearance - fills, pens, resolution)
- **Technical Data** (technical data, certificates, and standards)
- **Manufacturer Info** (links, contact, library version)
- **Instructions** (how to set the Qbiss One element)



With **corner elements** selected set the Frame Selection Settings on the corner to “Invisible”. Corner elements on both side of the Curtain Wall, must have the same “C-ID” for correct schedules listing.

### Model View Options

In Model View Options we can control the visibility of the “Element TYPE” and “Detail level”.

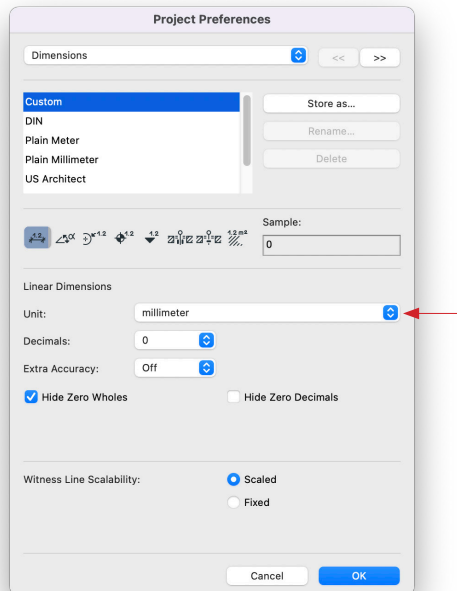
### 3D model

Trimo BIM libraries models can be used from the start of the building design, generating better visualization (Document > Creative Imaging > Photo Rendering Settings) and schedules with detailed info of the facade elements.

### Schedules

By IMPORTING “.xml” files in the “Scheme Settings”, **two schedule lists can be created (CW-Qbiss frames, CW- Qbiss panels)**. After importing they appear in the Navigator.

In “Project Preferences” (Options > Project Preferences > Dimensions) Linear Dimensions must be set to millimeter (mm).



Library Part Name	ELEMENT TYPE	Corner Cutting	Corner Angle	Corner Angle(C)	Extra Edge	Radius	Height(M Window(H))	Length (R) Window(W)	3D frontView	Outside Color (A)	Frame/Window Color	Inside Color (B)	profile A	profile B	Coating external	Coating internal	Corner ID	Connect Name	Penetration Frame/Window Color	Penetration Frame/Window Color	Penetration Window Color	pid
ObscureHElement G...	1	--	--	--	D	0	1	3		Light Silver RAL 9006	.	White RAL 9010	G	G	PVDF	PVDF						2
	1	--	--	--	D	0	1	1		Light Silver RAL 9006	.	White RAL 9010	G	G	PVDF	PVDF						1
	1	--	--	--	D	0	1	3		Light Silver RAL 9006	.	White RAL 9010	G	G	PVDF	PVDF						3
	1	--	--	--	D	0	1	3		Light Silver RAL 9006	.	White RAL 9010	G	G	PVDF	PVDF						2
	1	--	--	--	D	0	1	3		Light Silver RAL 9006	.	White RAL 9010	G	G	PVDF	PVDF						1

### Data exchange

Send both sheets in “excel” format to [inquiry@trimo-group.com](mailto:inquiry@trimo-group.com).

### CONTACT | HELP

Video instructions can be viewed on Trimo Design YouTube channel. Require additional information by contacting Trimo technical support: +386(0)7 34 60 200, [trimo@trimo-group.com](mailto:trimo@trimo-group.com).